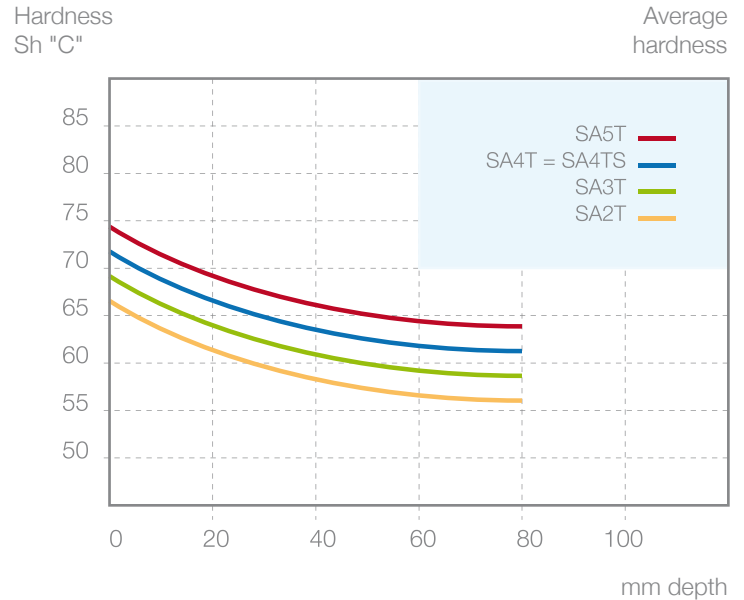


SA2T - SA3T - SA4T - SA4TS - SA5T

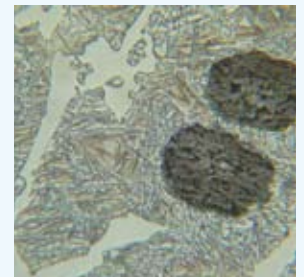
Nodular acicular cast iron

The SA2T grade is a nodular graphite cast iron with a pearlitic and bainite matrix. A modification in the percentage of the alloying elements, in particular nickel and molybdenum, enables a change in the matrix and in the amount of free carbides and therefore obtains, for the SA5T grade, an extremely hard bainite and martensite matrix, with excellent wear resistance.



NODULAR ACICULAR CAST IRON

SA2T
SA3T
SA4T
SA4TS
SA5T



500x Nital 1%

CAST IRON TYPES	% PHYSICAL COMPOSITION						MECHANICAL PROPERTIES		
	C	Si	Mn	Cr	Ni	Mo	Hardness (Sh "C")	RT (N/mm ²)	RF (N/mm ²)
SA2T	2.90	1.35	0.20	0.15	2.10	0.40	63-69	~ 550	~ 900
	3.70	1.90	1.00	0.70	3.00	0.95			
SA3T	2.90	1.30	0.30	0.20	2.30	0.50	64-73	~ 500	~ 850
	3.70	1.90	1.00	0.75	3.50	1.15			
SA4T	2.90	1.20	0.10	0.30	2.50	0.40	70-75	~ 450	~ 800
	3.70	1.80	0.90	0.80	3.70	1.20			
SA4TS	2.90	0.75	0.10	0.20	2.30	0.40	70-75	~ 450	~ 800
	3.70	1.80	0.90	0.80	3.70	1.20			
SA5T	2.90	1.30	0.20	0.45	2.50	0.60	73-78	~ 400	~ 750
	3.70	1.70	1.00	0.90	4.00	1.10			