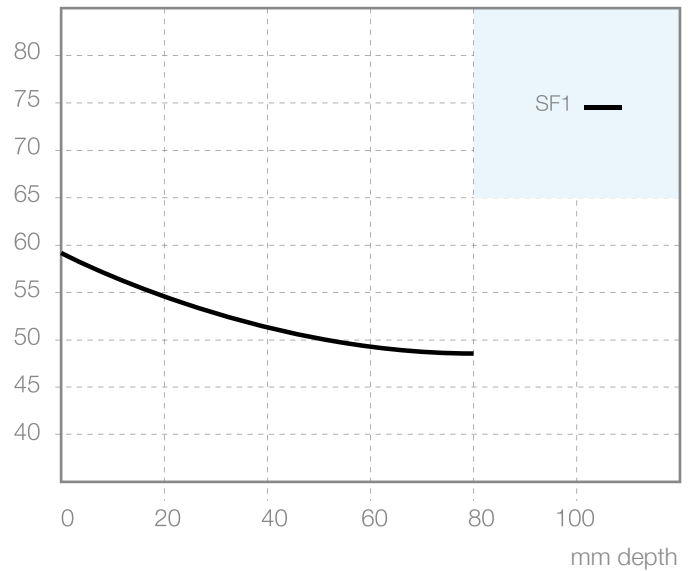


Nodular cast iron with a ferritic - pearlitic matrix

SF1 is a nodular graphite cast iron with a ferritic-pearlitic matrix. This type of microstructure, combined with a limited free carbide content, confers to the SF1 grade excellent mechanical properties and a high resistance level against firecracks and thermal stresses.

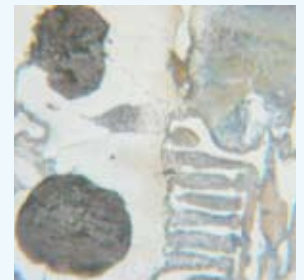
Hardness
Sh "C"

Average
hardness



NODULAR CAST IRON WITH A FERRITIC - PEARLITIC MATRIX

SF1



500x Nitil 1%

CAST IRON TYPES	% PHYSICAL COMPOSITION						MECHANICAL PROPERTIES		
	C	Si	Mn	Cr	Ni	Mo	Hardness (Sh"C")	RT (N/mm ²)	RF (N/mm ²)
SF1	2.90	1.50	0.10	0.10	1.90	0.30	55-62	~ 600	~ 1200
	3.70	2.20	0.70	0.60	2.90	0.90			