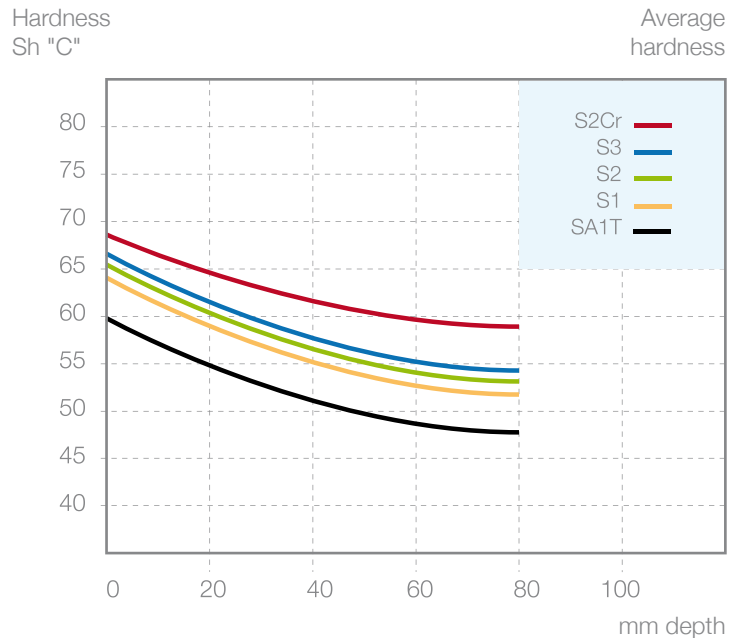


SA1T - S1 - S2 - S2Cr - S3

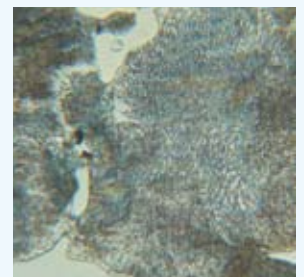
Nodular cast iron with a pearlitic matrix

Nodular graphite cast iron with a pearlitic matrix and variable amounts of carbides, cementite and ledeburite. Different percentages of the alloying elements in the chemical composition, especially for the S2Cr grade, mean modifications of the mechanical properties, of the hardness range and of the wear resistance level.



NODULAR CAST IRON WITH A PEARLITIC MATRIX

SA1T
S1
S2
S2Cr
S3



500x Nital 1%

CAST IRON TYPES	% PHYSICAL COMPOSITION						MECHANICAL PROPERTIES		
	C	Si	Mn	Cr	Ni	Mo	Hardness (Sh°C°)	RT (N/mm ²)	RF (N/mm ²)
SA1T	2.90 3.70	1.40 2.00	0.20 1.00	0.10 0.65	2.10 3.10	0.35 0.90	58-66	~ 600	~ 1200
S1	2.90 3.70	1.40 2.00	0.20 0.90	0.10 0.65	2.10 2.90	0.10 0.80	60-66	~ 550	~ 900
S2	2.90 3.70	1.30 1.85	0.30 0.90	0.30 0.80	2.10 2.90	0.30 0.90	65-69	~ 500	~ 850
S2Cr	2.90 3.70	1.45 2.00	0.30 1.00	0.40 1.15	2.10 3.30	0.10 0.70	64-73	~ 550	~ 800
S3	2.90 3.70	1.30 1.90	0.30 1.00	0.30 0.85	2.10 2.90	0.30 0.85	67-70	~ 450	~ 800